

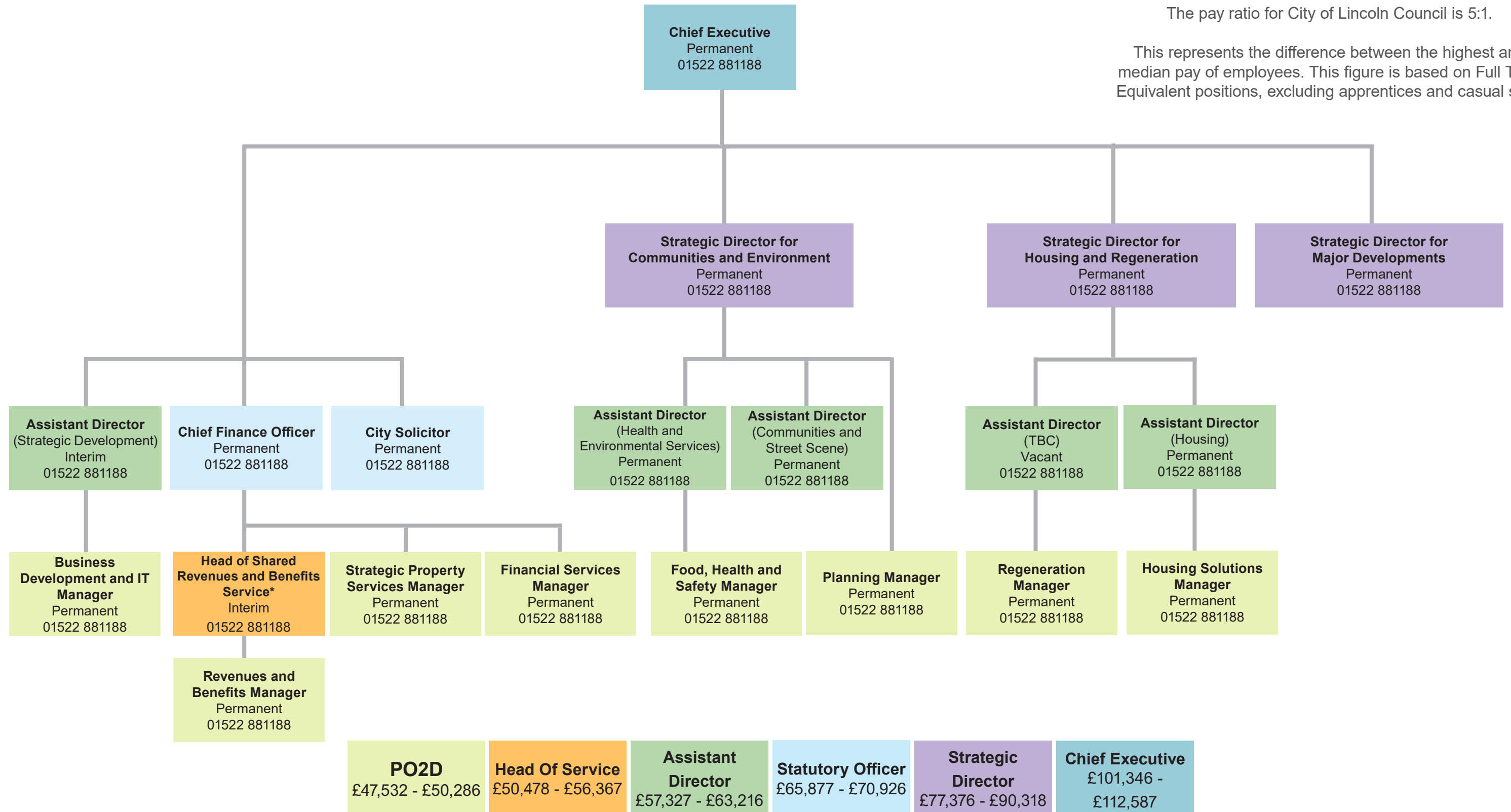
City of Lincoln Council Organisation Chart

This chart shows positions earning a salary of £50,000 or more at City of Lincoln Council.
(Details correct as of January 2017)

Pay ratio 5:1

The pay ratio for City of Lincoln Council is 5:1.

This represents the difference between the highest and median pay of employees. This figure is based on Full Time Equivalent positions, excluding apprentices and casual staff.



These boxes represent the pay scales currently in use by City of Lincoln Council.
All posts on the organisation chart are colour coded allowing you to see how much they're paid.

*This post holder reports to a joint committee from City of Lincoln Council and North Kesteven District Council.