

Lincoln City Profile - 2022 – 2023 – Education

Key observations:

- The percentage of people in the city with an NVQ Level 1 decreased slightly in 2021, to 85.2%
- There was a decrease in the percentage of people with an NVQ Level 2, to 68.1%
- The percentage of people with an NVQ Level 3 decreased in 2021 to 51.0%
- However, the percentage of people with an NVQ Level 4 or higher qualification increased in 2021, to 35.3%

Education at all levels was severely impacted by the Covid-19 pandemic, with most assessments/examinations planned for summer 2020 and summer 2021 unable to go ahead. Alternative assessment arrangements were implemented, and within the 2020 exam period qualifications were generated by Centre Assessed Grades (CAG's). CAGs were awarded by educational institutions based on expected/predicted student attainment, taking account of the grades students were expected to have attained if their education had not been impacted by the pandemic.

For 2021 assessments and examinations, qualifications were awarded slightly differently, based on Teacher Assessed Grades (TAGs). Much of the same evidence was used for TAGs as for CAGs, with additional consideration given to the progress students had made during the pandemic and their achievements throughout.

As neither the 2020 and 2021 grades were awarded based on the standard examination criteria, and because each school had used their own selection of assessment material for the awards made, central government decided to not produce performance data for schools at that time.

Data for Attainment 8 and Progress 8 is now available for the academic year 2021/2022, however comparisons are unable to be made with previous years' due to the gaps in the data arising from the pandemic.

PERCENTAGE OF RESIDENTS AGED 16-64 IN LINCOLN WITH NVQ QUALIFICATIONS LEVELS 1-4 AS OF 2021

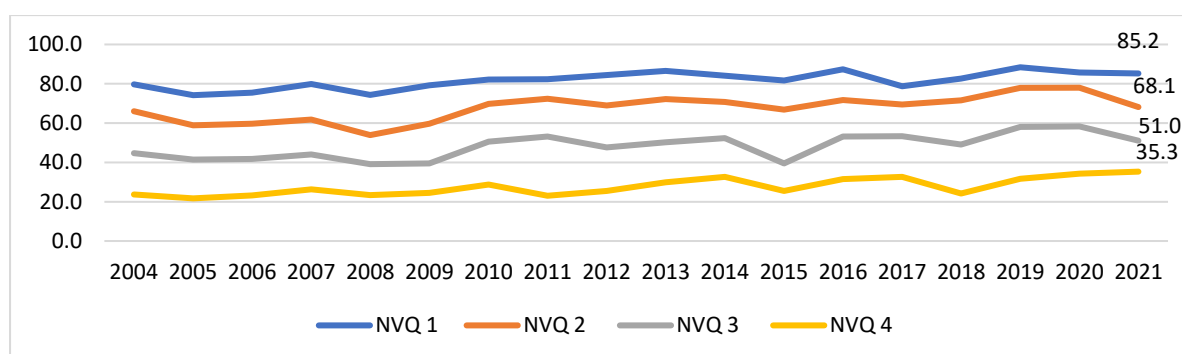


Figure 1

[Source – NOMIS 2023](#)

Figure 1 shows the percentage of residents aged 16-64 in Lincoln with NVQ qualifications at Levels 1-4. There was a small decrease in the number of residents with NVQ Level 1 qualifications, from 85.7% in 2020 to 85.2% in 2021. Similar trends were observed for both NVQ Levels 2 and 3, and NVQ Level 4 saw an increase.

For 2022, the dataset for 'no qualifications' has not been included due to the sample size being too small to be statistically reliable.

PERCENTAGE OF RESIDENTS AGED 16-64 WITH NVQ LEVEL 1 QUALIFICATIONS AS OF 2021 (LINCOLN VS EAST MIDLANDS)

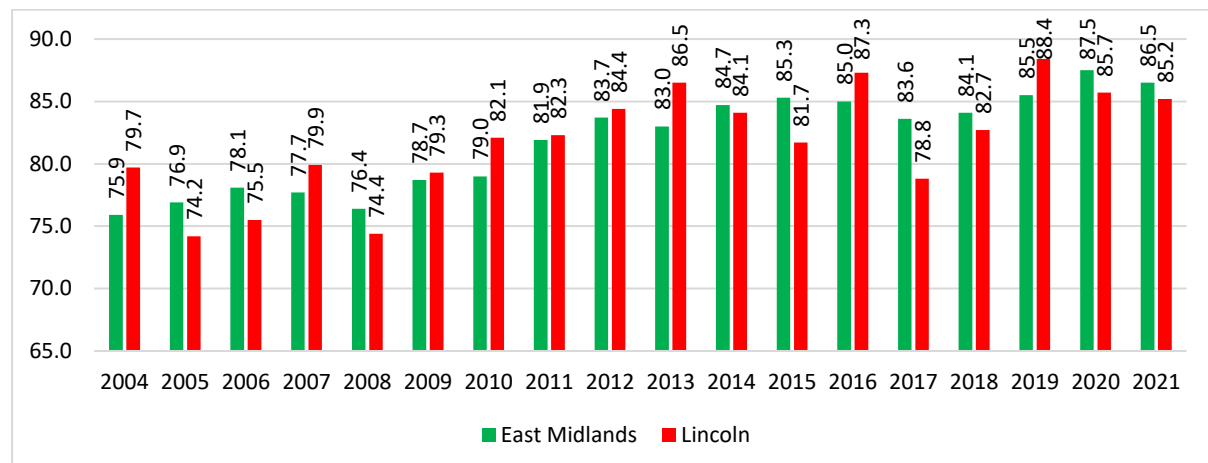


Figure 2
[Source – NOMIS 2023](#)

Figure 2 shows the percentage of residents aged 16-64 with NVQ Level 1 qualifications in Lincoln decreased in 2021 to 85.2%. In comparison the East Midlands figure also decreased to 86.5% in 2021 from 87.5% in 2020.

Please note that data for 2022 has not been included due to the sample size being too small.

PERCENTAGE OF RESIDENTS AGED 16-64 WITH NVQ LEVEL 2 QUALIFICATIONS AS OF 2021 (LINCOLN VS EAST MIDLANDS)

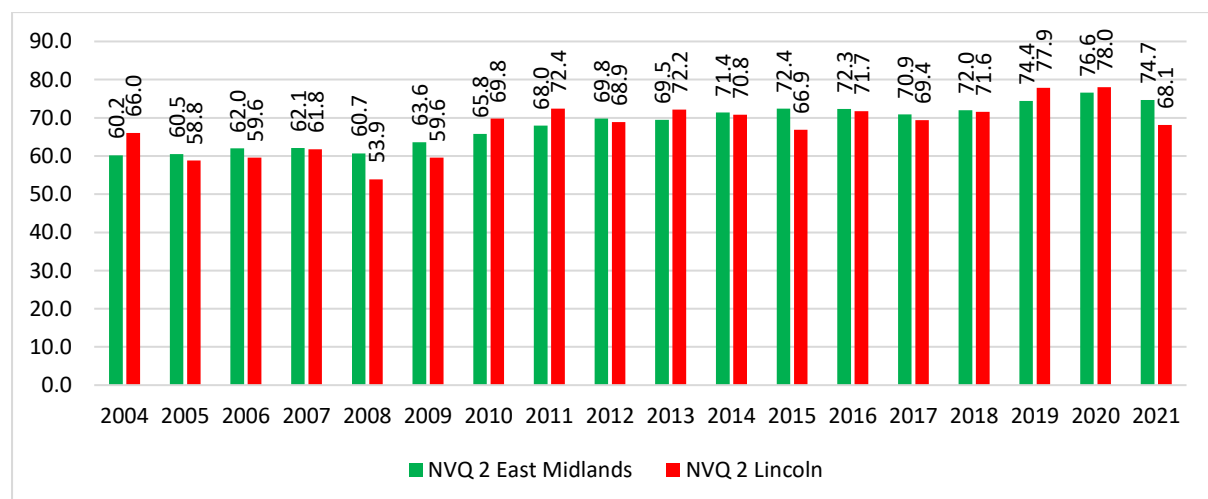


Figure 3
[Source – NOMIS 2023](#)

Figure 3 shows that, in 2021, the percentage of residents aged 16-64 with NVQ Level 2 qualifications decreased to 68.1%. This was lower than the overall percentage for the East Midlands (74.7%). The data for 2022 has not been included due to the sample size being too small to be statistically reliable.

PERCENTAGE OF RESIDENTS AGED 16-64 WITH NVQ LEVEL 3 QUALIFICATIONS AS OF 2021 (LINCOLN VS EAST MIDLANDS)

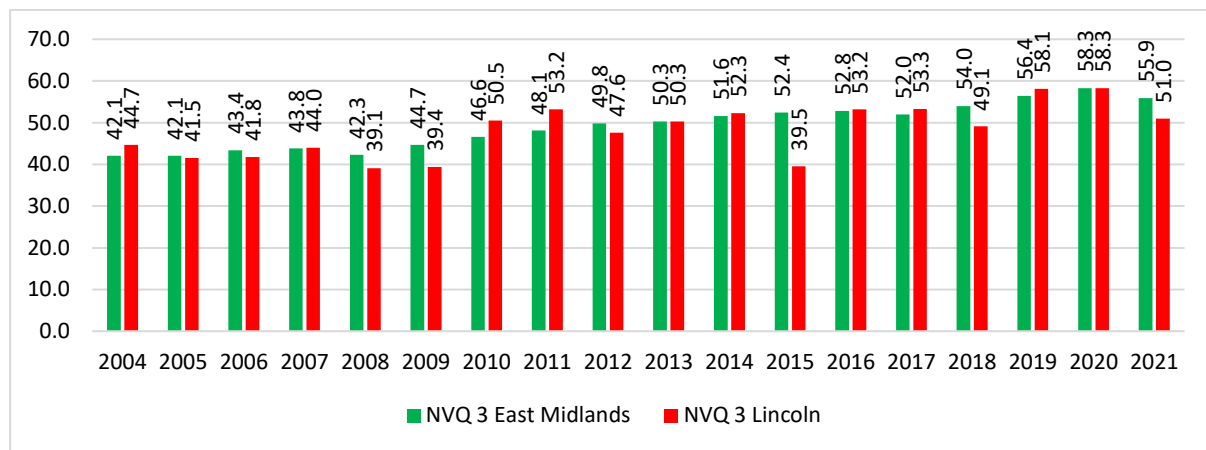


Figure 4

[Source – NOMIS 2023](#)

Figure 4 shows that, in 2020, the percentage of Lincoln residents aged 16-64 with NVQ Level 3 qualifications increased to 58.6%. This remains above the figure for East Midlands, reported at 58.2%. The data for 2022 has not been included due to the sample size being too small to be statistically reliable.

PERCENTAGE OF RESIDENTS AGED 16-64 WITH NVQ LEVEL 4+ QUALIFICATIONS AS OF 2021 (LINCOLN VS EAST MIDLANDS)

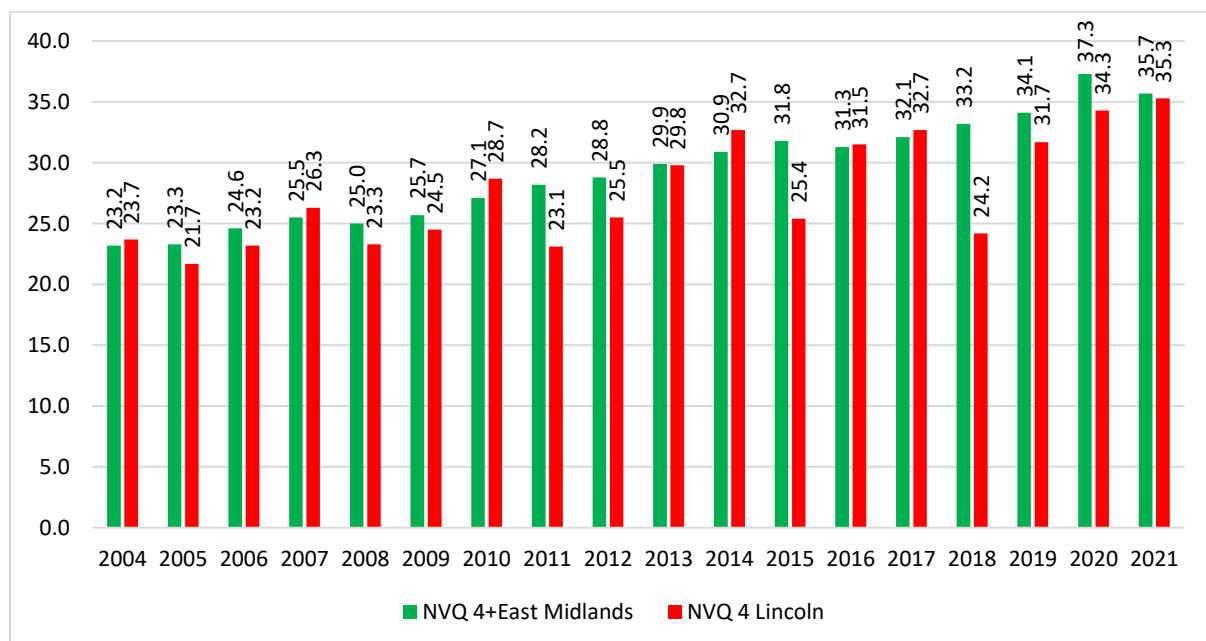


Figure 5

[Source – NOMIS 2023](#)

Figure 5 shows that, in 2021, the percentage of residents aged 16-64 with NVQ Level 4+ qualifications increased to 35.3%. This percentage remains below the East Midlands figure, which is reported at 35.7%.

AVERAGE PROGRESS 8 SCORE PER PUPIL (LINCOLN VS EAST MIDLANDS VS ENGLAND) AS OF 2021/22

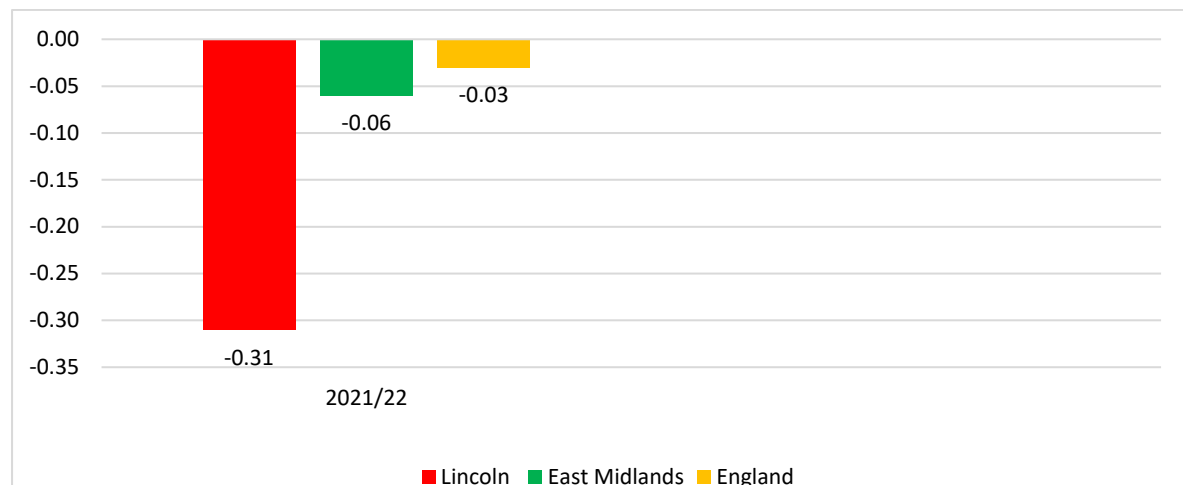


Figure 6

[Source – LG Inform 2023](#)

Figure 6 shows the average ‘Progress 8’ score for Lincoln per pupil in 2021/22. The city’s ‘Progress 8’ score was -0.31, below the average scores reported for East Midlands (-0.06) and England (-0.03).

‘Progress 8’ is a ‘value-added’ measure that indicates how much a secondary school has helped pupils improve or progress over a five-year period, when compared to a government-calculated projections. The score is calculated based on an average score of 0; a score above 0 means pupils will have progressed further than other children with similar levels of attainment nationally, whereas a score below 0 means that pupils have progressed below expected projections when compared to their peers.

AVERAGE PROGRESS 8 SCORE PER PUPIL (LINCOLN VS NEAREST NEIGHBOURS) AS OF 2021/22

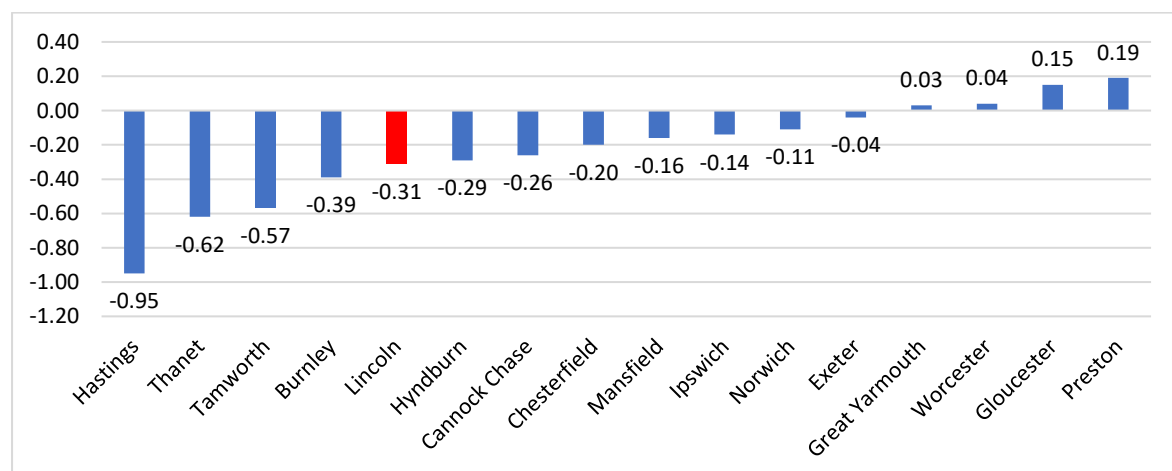


Figure 7

[Source – LG Inform 2023](#)

Figure 7 shows that Lincoln had the 5th lowest average Progress 8 score in 2021/22, at -0.31. In comparison, Hastings had the lowest with a score of -0.95 and Preston had the highest score at 0.19.

AVERAGE ATTAINMENT 8 SCORE PER PUPIL (LINCOLN VS EAST MIDLANDS VS ENGLAND) AS OF 2021/22

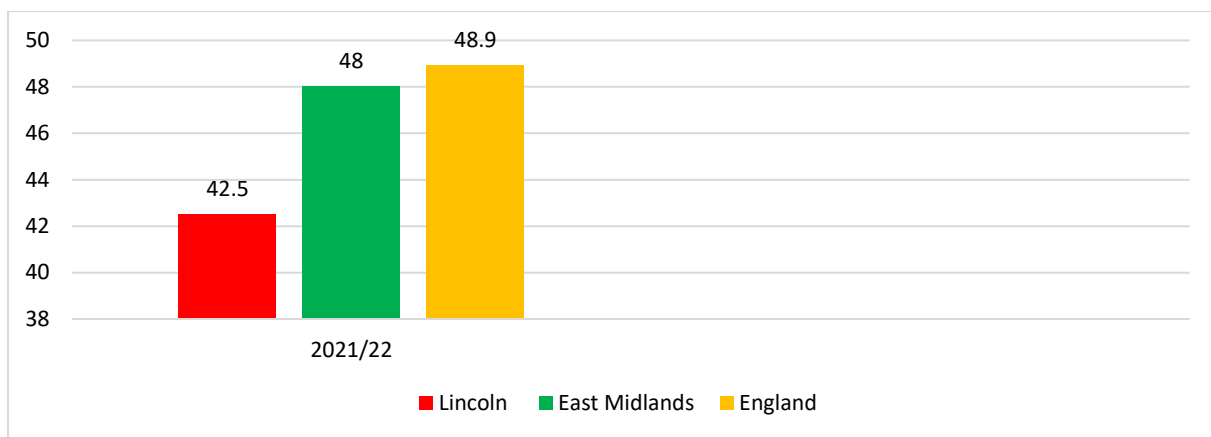


Figure 8

[Source – LG Inform 2023](#)

Figure 8 shows the average 'Attainment 8' score for Lincoln per pupil in 2021/22 being 42.5, below the average scores reported for East Midlands (48) and England (48.9).

'Attainment 8' is a measure published annually, which compares the average academic performance of individual secondary schools. The score is calculated by adding together pupils' highest grades across eight government approved school subjects. These grades are converted into points, and a formula is applied that provides the school's overall 'Attainment 8' score.

AVERAGE ATTAINMENT 8 SCORE PER PUPIL (LINCOLN VS NEAREST NEIGHBOURS) AS OF 2021/22

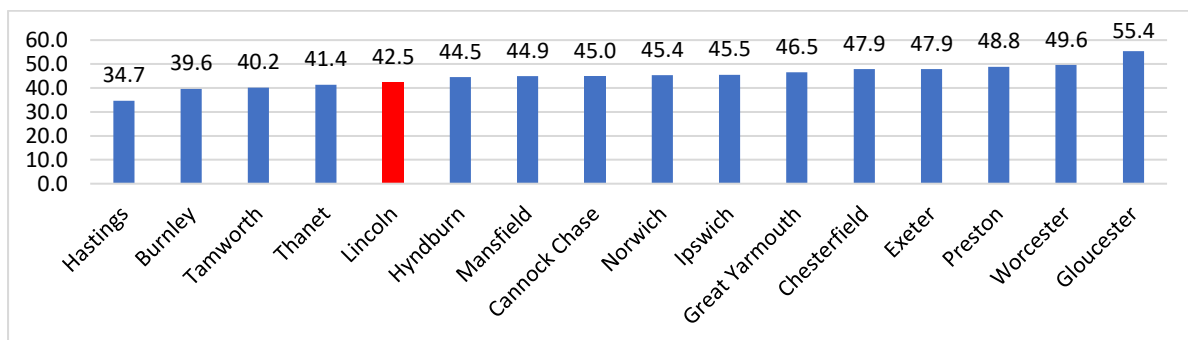


Figure 9

[Source – LG Inform 2023](#)

Figure 9 shows that Lincoln had the 5th lowest average Attainment 8 score in 2021/22 at 42.5. In comparison, Hastings had the lowest with a score of 34.7 and Gloucester had the highest score at 55.4.