

CREMATORIUM  
MEMORIAL

# Price List

1st April 2026 to 31st March 2027



**Lincoln  
Crematorium**

CITY OF LINCOLN COUNCIL



## The Memorial Garden

This new memorial garden has been designed to offer a range of memorials where families can visit to remember loved ones.

The range of memorials has been chosen to give a choice of the type of memorial that can be leased.

### Sanctum 2000 Cremated Remains Vault

The vaults can accommodate two sets of cremated remains. These grey granite vaults are supplied with a black granite tablet and flower vase at the base to place fresh flowers. You may also add a photograph or a design.

This memorial is sold on a 20 year lease and includes a black granite tablet inscribed with up to 80 letters

**£1,128.00**

#### Additional options

Designer images on plaques (from) **£176.00**

Ceramic photo plaques:

4cm x 3cm **£165.00**

7cm x 5cm **£223.00**

Additional letters on Sanctum plaque (per letter)

**£2.20**

### Vase Blocks

Purchase of a grey granite vase block complete with a black granite tablet finished in gilded lettering. A flower holder vase is located at the top to place fresh flowers. This memorial is available on a 10 year lease.

**£505.00**

Renewal **£346.00**

### Granite Bench Tablets

The granite benches have 2 tablets available for lease, 1 located on each leg. These memorials do not have the provision for a floral tribute. This memorial is sold on a 10 year lease and includes a black granite tablet.

**£476.00**

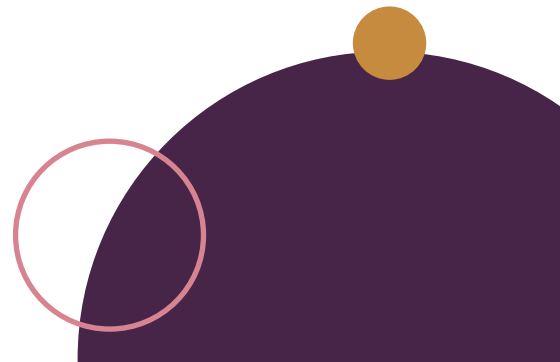
Renewal **£324.00**

### Wall Tablets

Located on the rear of the Book of Remembrance building, these memorials do not have the provision for a floral tribute. This memorial is sold on a 10 year lease and includes a black granite tablet.

**£348.00**

Renewal **£208.00**



## 22nd NOVEMBER

**Mackman, Ronald John**  
A dear husband, father and grandad.  
Died 22nd November, 1989. Aged 74 years.  
In our hearts he will always stay.  
Loved and remembered every day.

**Whyers, John Cecil**  
Loved and remembered always dad. 86 years.

**Godward, Ernest**  
In heavenly love abiding. 1914 - 1989.

**Taylor, Ruth**  
In ever loving remembrance. 1900 - 1989.

**Greenhalgh, Florence Annie**  
Dear wife, mother and grandma. 1989.

**Smith, Sarah Ellen**  
Loved and remembered always. 1900 - 1990.

**James, Daisy**  
At rest 1908 - 1990.

**Robinson, Dorothy Ethel**  
Passed away 22nd November 1990.  
Dear mother,  
and great grandma.  
Remembered every day.

**Dobson, Jane**  
Dearest mum and NANA.  
7th July 1910 - 22nd November 1995.  
In our hearts you will always stay.  
Loved and remembered every day.

**Curtis, Olive Gertrude**  
1921. Loved and remembered always. 2001.

**Millman, John Daniel**  
Loving memories of a  
Dear husband, father and grandpa.  
Born 1st February, 1917. Died 2003.  
Always in our thoughts.

**Clarke, Constance Muriel**  
Born 11th September 1911.  
Died 22nd November 2003.  
Much loved wife, mother and nan.  
Rest in peace.

**Mac Millan, Betty**  
Love you always. "2004"

**Smith, Ruth Elizabeth**  
Born 1935. Peace at last. 2004

**Goulding, Janet Anne**  
A devoted wife, mother and grand  
Born 21st December 1923.  
She lived for those she loved.  
And those she loved remember  
God will link the broken chain.  
As one by one we meet again.

**Spinkson, Barbara**  
Loved, Ever



## The Book of Remembrance

The Remembrance books are housed in our book room located opposite the main crematorium building. The book will be open each day at the appropriate page in order.

- 2 Line Entry      £129.00
- 5 Line Entry      £160.00
- 8 Line Entry      £190.00



It is also possible to view all dates on the digital Book of Remembrance at the crematorium and also online at <https://lincoln.bookofremembrance.uk>

Please note dependant on the date of application it may take up to eight months for the entry to be available on the digital book.

**Miniature books and memorial cards are available on enquiry.**

## Memorial Tree

The Memorial Tree is the newest addition to our Memorial Garden. The tree holds leaf plaques that can have an inscription of name, date of birth and date of death and a further option of a small inscription on the back of up to 24 characters. This memorial is available on a 10 year lease.

- Memorial plaque      £222.00
- Additional option**
- Inscription on back of plaque      £32.00

### Book of Remembrance Opening Times

<b>Monday - Thursday</b>	9.00am - 4.30pm
<b>Friday</b>	9.00am - 4.00pm
<b>Saturday &amp; Sunday</b>	10.00am - 4.00pm
<b>Public Holidays</b>	10.00am - 4.00pm

(Christmas Day, Boxing Day, Good Friday etc.)



## Garden of Remembrance

The Garden of Remembrance is a natural area in the grounds of the Crematorium where cremated remains can be buried.

Cremated remains are usually buried in the area of month and year of cremation however they can be buried near to an area of a loved one. The Garden of Remembrance is a natural area, because of this we do not allow headstones, plaques, wind chimes, plants/trees, markers or similar. We also request that flowers are left loose on the ground. Tied flower bunches will be moved to the Book Room and unpermitted items will be removed and stored for six months prior to disposal. Permanent memorials are available elsewhere in the Crematorium grounds. Alternatively you can have cremated remains buried in a cremation plot in a Cemetery, please ask to see our Burial information and pricelist. Memorials in the Crematorium grounds are also available for people who are buried away from the Crematorium.



PLEASE CONTACT THIS OFFICE FOR  
THE APPROPRIATE APPLICATION FORM



# Lincoln Crematorium

CITY OF LINCOLN COUNCIL

Please feel free to contact us  
if you would like any further  
information or to arrange a visit.

T: 01522 873646

E: [bereavementservices@lincoln.gov.uk](mailto:bereavementservices@lincoln.gov.uk)

Monday - Thursday: 8.30am - 5pm

Friday: 8.30am - 4.30pm

Lincoln Crematorium • Washingborough Road  
Lincoln • Lincolnshire • LN4 1EF

